

# Company Information

Field - Metallica, metallic parts

## Company Profile

URL - <http://www.jkb-net.co.jp>

Company name - JKB Co.,Ltd.

Established - April, 1951

Address - 2-34-21 Shimosakunobe,  
Takatsu Ward, Kawasaki

Tel - 044-888-1121

Representative - Keiichiro Hirai

Capital - 10,000,000 yen

No. of employees - 33

Overseas office - None

Prospective overseas business

We will start selling products in the  
foreign markets of various countries  
in America, Europe and Asia.

Main business:

We design and manufacture precise  
progressive dies, and manufacture  
precise press parts.

# Company name - JKB Co.,Ltd.

**Inquiries** - [info-553gt@jkb-net.co.jp](mailto:info-553gt@jkb-net.co.jp)

## About JKB Co.,Ltd.

Our founding principle is to "make the impossible possible". As such, we aim to continually evolve as professional stamping die designers, manufacturers, and stamping professionals.

## Company strengths

We are able to stamp parts that were previously thought to be impossible to manufacture, provide a cheaper construction method, and help companies make lighter, more compact products with our ultra-precise processing.

## Main products

### High precision difficult to manufacture parts

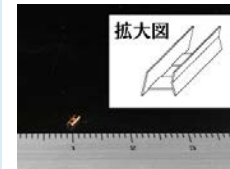


This complicated form (SUS) created by repeatedly drawing and lancing was created using a progressive die. We were **the first company in Japan** to achieve this.

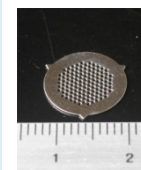


We created a V shape on the inside of the cylinder whilst maintaining a **circularity of 20μm**, thus **reducing the number of required parts**.

### Ultra precise parts



We are able to make this form at a **dimensional tolerance of  $\pm 10\mu\text{m}$** , and **create a smaller product** using a progressive die.



We successfully stamped more than 120 small holes within an area 1/6th of a small coin with a **hole pitch accuracy of 3μm or less**. We achieved this at **1/10th of the standard cost**.